

ARCA

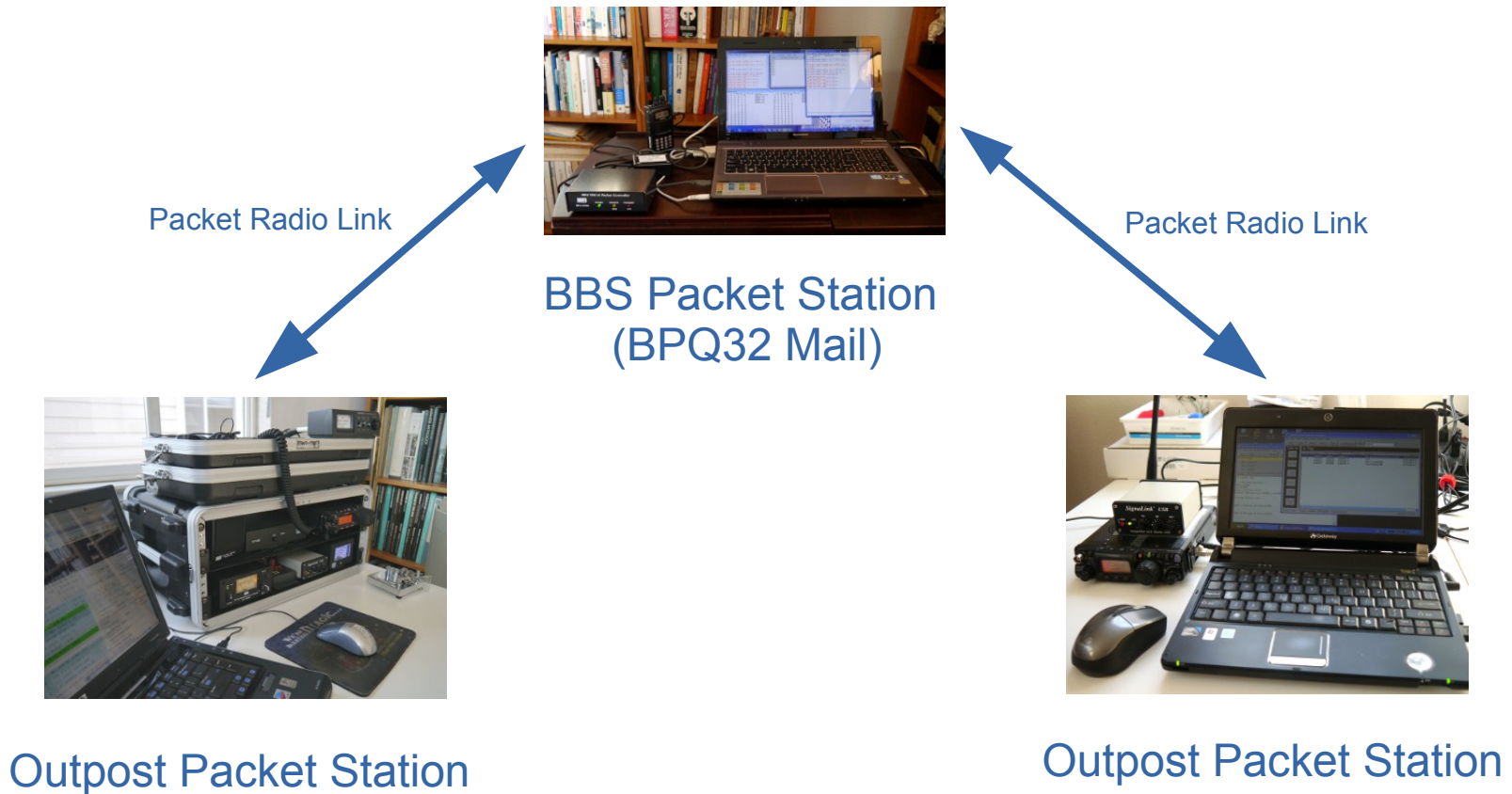


Outpost Mail Demo with Packet Radio BBS

Jim Wright - KJ6UHT
03/27/2015

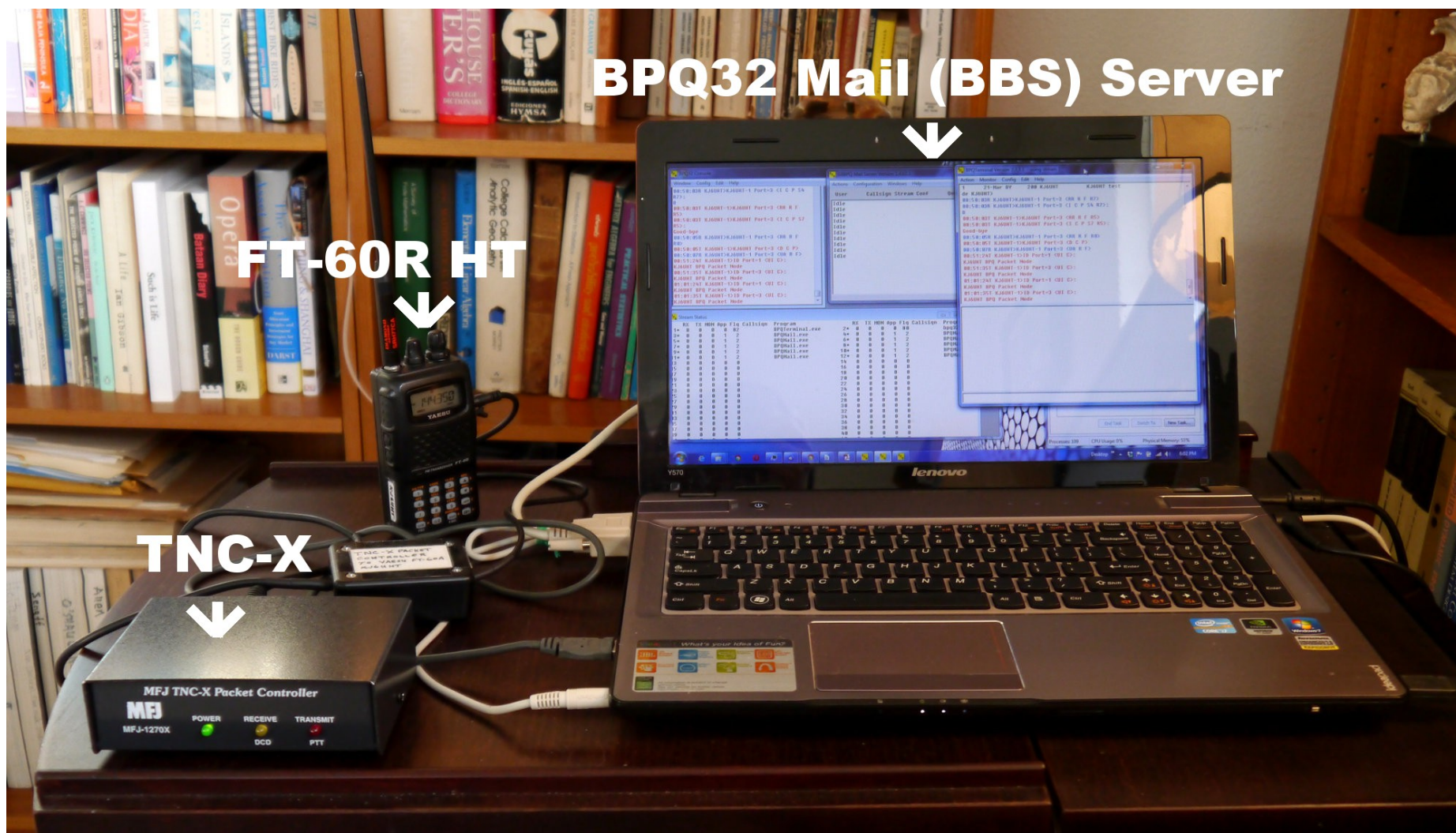


Packet Demo Overview



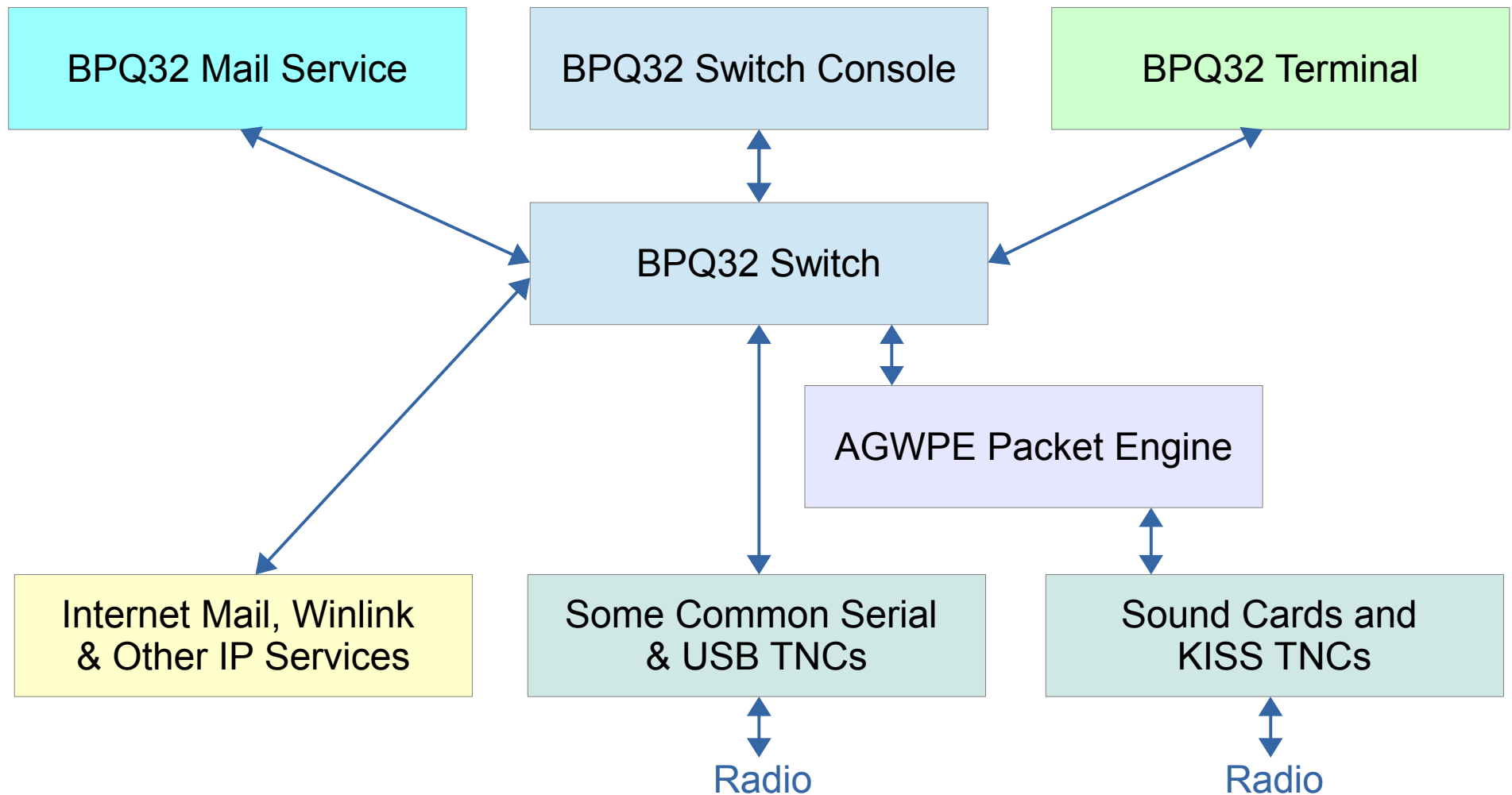


BBS Server Station





BPQ32 Mail (BBS) Server





BPQ32 Mail Server (BBS)

BPQ Mail Server

G8BPQ Mail Server Version 1.4.63.1

Actions Configuration Windows Help

User	Callsign	Stream	Conf	Queue	UTC	18:53	Local	11:53
Idle					Msgs	21		
Idle					Sysop Msgs	0		
Idle					Held Msgs	0		
Idle					SMTTP Msgs	0		
Idle					Msg SEM Clashes	0		
Idle					Alloc SEM Clashes	0		
Idle					Con SEM Clashes	0		

BPQ32 Console

Window Actions

```
ALIAS2:KJ6UHT via KJ6UHT-1 qlty=255
18:20:30T KJ6UHT-1>ID Port=1 <UI C>:
KJ6UHT BPQ Packet Node
18:20:41T KJ6UHT-1>ID Port=3 <UI C>:
KJ6UHT BPQ Packet Node
18:30:31T KJ6UHT-1>ID Port=1 <UI C>:
KJ6UHT BPQ Packet Node
18:30:42T KJ6UHT-1>ID Port=3 <UI C>:
KJ6UHT BPQ Packet Node
18:30:53T KJ6UHT-1>ID Port=3 <UI C>:
KJ6UHT BPQ Packet Node
18:40:31T KJ6UHT-1>ID Port=1 <UI C>:
KJ6UHT BPQ Packet Node
18:40:42T KJ6UHT-1>ID Port=3 <UI C>:
KJ6UHT BPQ Packet Node
18:50:32T KJ6UHT-1>ID Port=1 <UI C>:
KJ6UHT BPQ Packet Node
18:50:43T KJ6UHT-1>ID Port=3 <UI C>:
KJ6UHT BPQ Packet Node
```

BPQ Terminal

BPQTerminal Version 2.2.3.1 - using stream 1

Action Monitor Config Edit Help

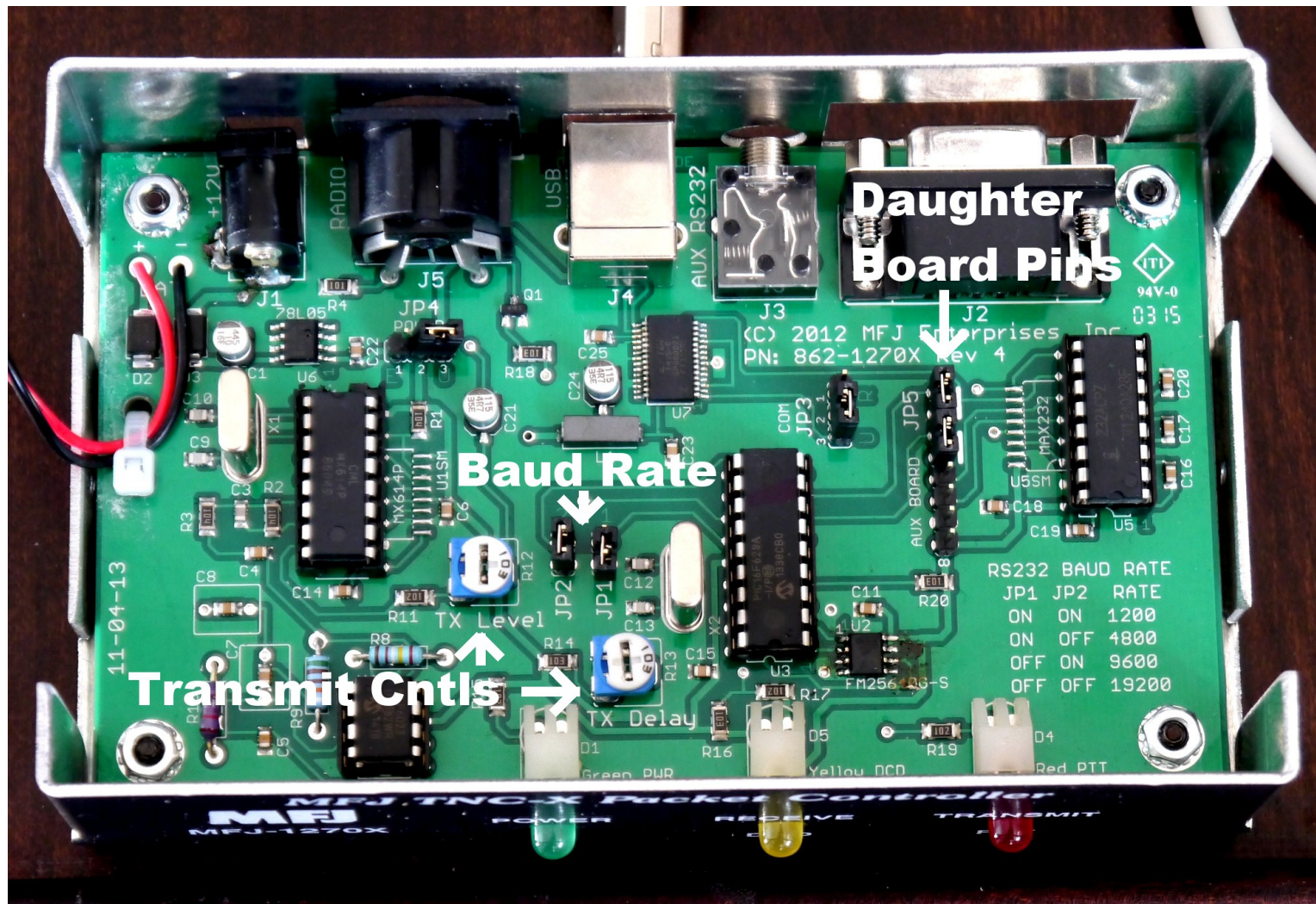
```
ALIAS2:KJ6UHT via KJ6UHT-1 qlty=255
18:20:30T KJ6UHT-1>ID Port=1 <UI C>:
KJ6UHT BPQ Packet Node
18:20:41T KJ6UHT-1>ID Port=3 <UI C>:
KJ6UHT BPQ Packet Node
18:30:31T KJ6UHT-1>ID Port=1 <UI C>:
KJ6UHT BPQ Packet Node
18:30:42T KJ6UHT-1>ID Port=3 <UI C>:
KJ6UHT BPQ Packet Node
18:30:53T KJ6UHT-1>ID Port=3 <UI C>:
KJ6UHT BPQ Packet Node
18:40:31T KJ6UHT-1>ID Port=1 <UI C>:
KJ6UHT BPQ Packet Node
18:40:42T KJ6UHT-1>ID Port=3 <UI C>:
KJ6UHT BPQ Packet Node
18:50:32T KJ6UHT-1>ID Port=1 <UI C>:
KJ6UHT BPQ Packet Node
18:50:43T KJ6UHT-1>ID Port=3 <UI C>:
```

Stream Status

RX	TX	MON	App	Flq	Callsign	Program	RX	TX	MON	App	Flq	Callsign	Program
1*	0	0	0	0	82	BPQTerminal.exe	2*	0	0	0	1	2	BPQMail.exe
3*	0	0	0	1	2	BPQMail.exe	4*	0	0	0	1	2	BPQMail.exe
5*	0	0	0	1	2	BPQMail.exe	6*	0	0	0	1	2	BPQMail.exe
7*	0	0	0	1	2	BPQMail.exe	8*	0	0	0	1	2	BPQMail.exe
9*	0	0	0	1	2	BPQMail.exe	10*	0	0	0	1	2	BPQMail.exe
11*	0	0	0	1	2	BPQMail.exe	12*	0	0	0	0	80	bpq32.exe
13	0	0	0	0	0		14	0	0	0	0	0	
15	0	0	0	0	0		16	0	0	0	0	0	
17	0	0	0	0	0		18	0	0	0	0	0	
19	0	0	0	0	0		20	0	0	0	0	0	
21	0	0	0	0	0		22	0	0	0	0	0	
23	0	0	0	0	0		24	0	0	0	0	0	
25	0	0	0	0	0		26	0	0	0	0	0	
27	0	0	0	0	0		28	0	0	0	0	0	
29	0	0	0	0	0		30	0	0	0	0	0	
31	0	0	0	0	0		32	0	0	0	0	0	
33	0	0	0	0	0		34	0	0	0	0	0	
35	0	0	0	0	0		36	0	0	0	0	0	
37	0	0	0	0	0		38	0	0	0	0	0	
39	0	0	0	0	0		40	0	0	0	0	0	
41	0	0	0	0	0		42	0	0	0	0	0	
43	0	0	0	0	0		44	0	0	0	0	0	
45	0	0	0	0	0		46	0	0	0	0	0	
47	0	0	0	0	0		48	0	0	0	0	0	
49	0	0	0	0	0		50	0	0	0	0	0	



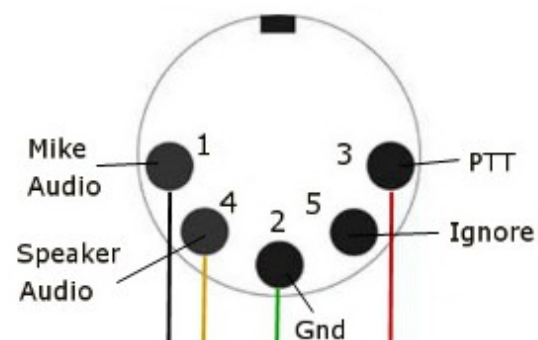
MFJ TNC-X Packet Controller



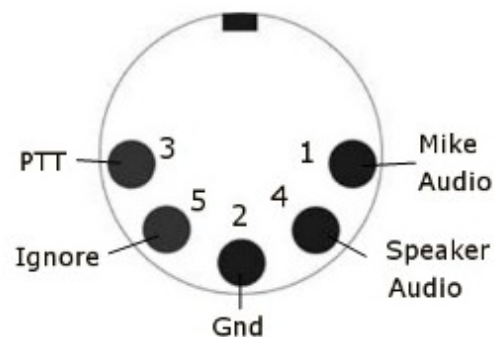


FT-60R to TNC-X Cable

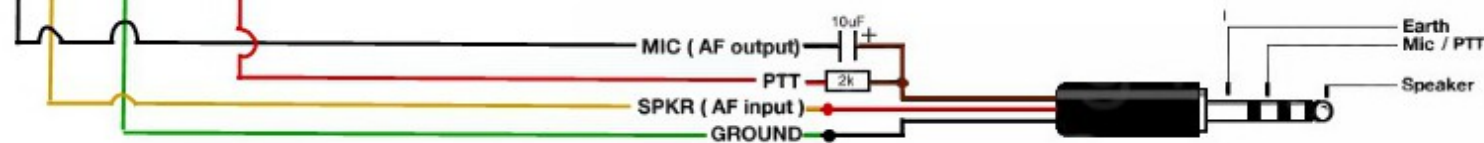
MFJ-5205 5-Pin DIN Plug/Cable



MFJ-1270X TNC-X Rear 5-Pin DIN Connector



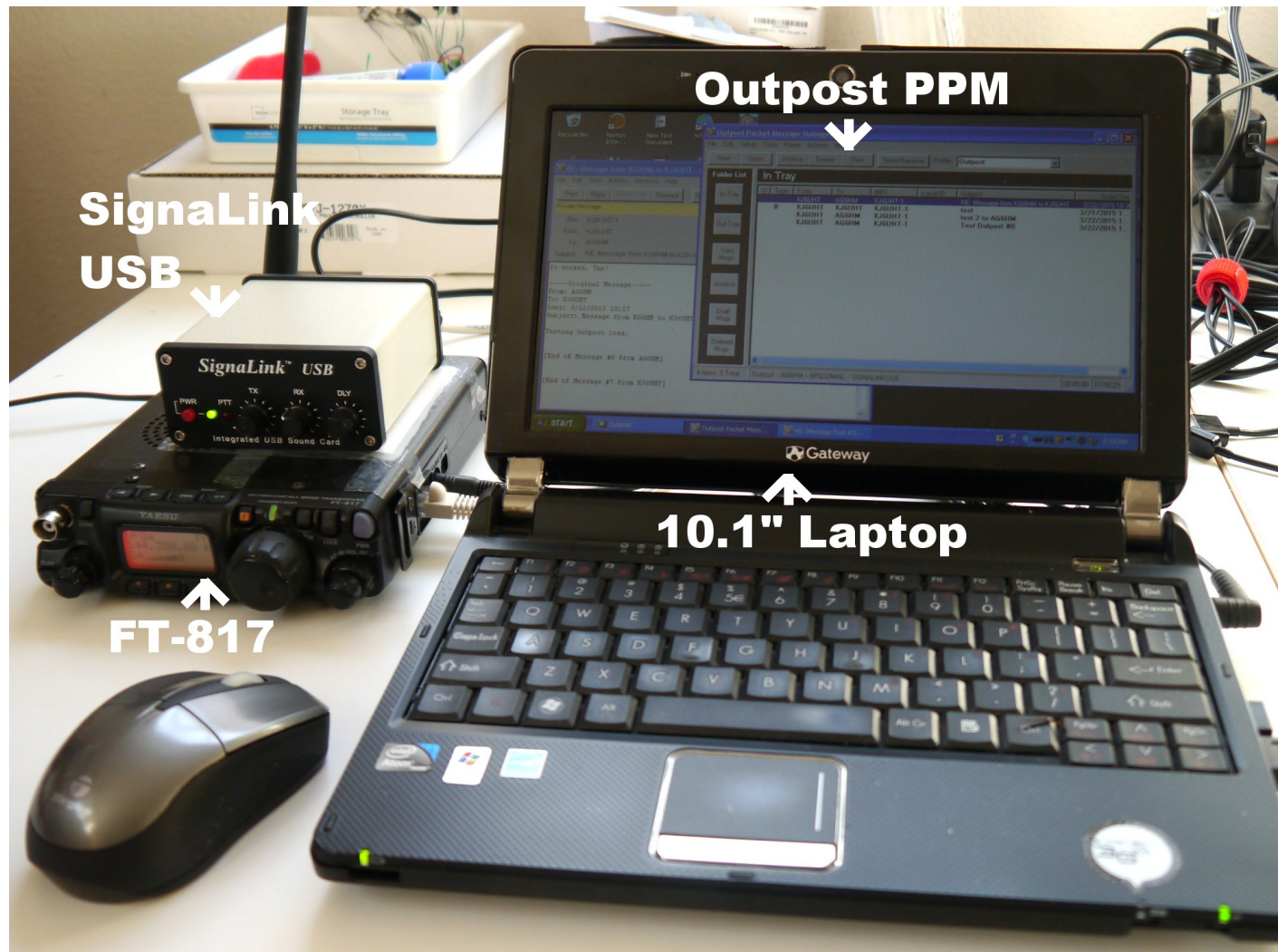
10 uF Electrolytic Cap
& 2K Resistor



CT-53 4 Barrel Plug/Cable

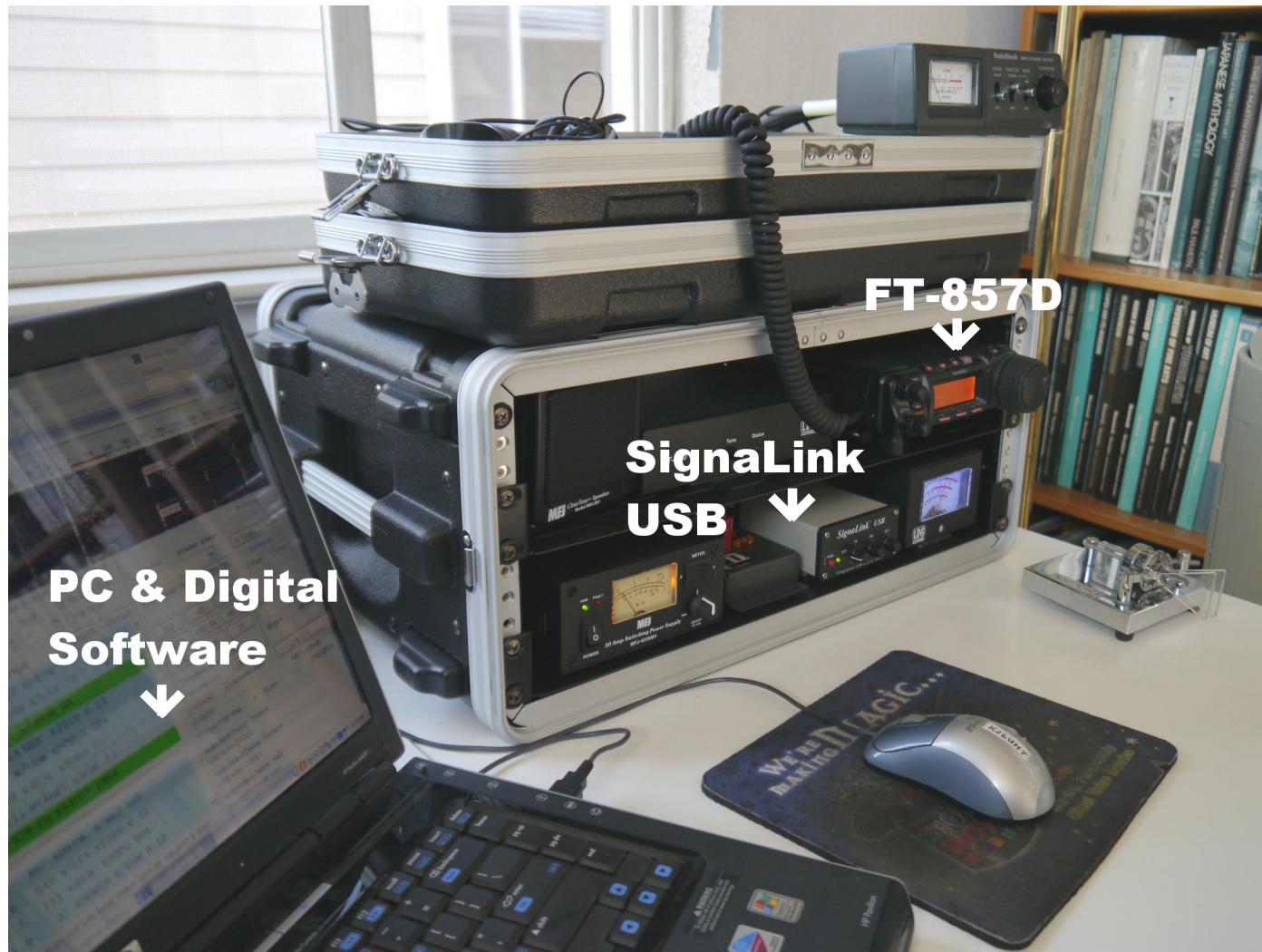


Outpost Packet Station 1





Outpost Packet Station 2

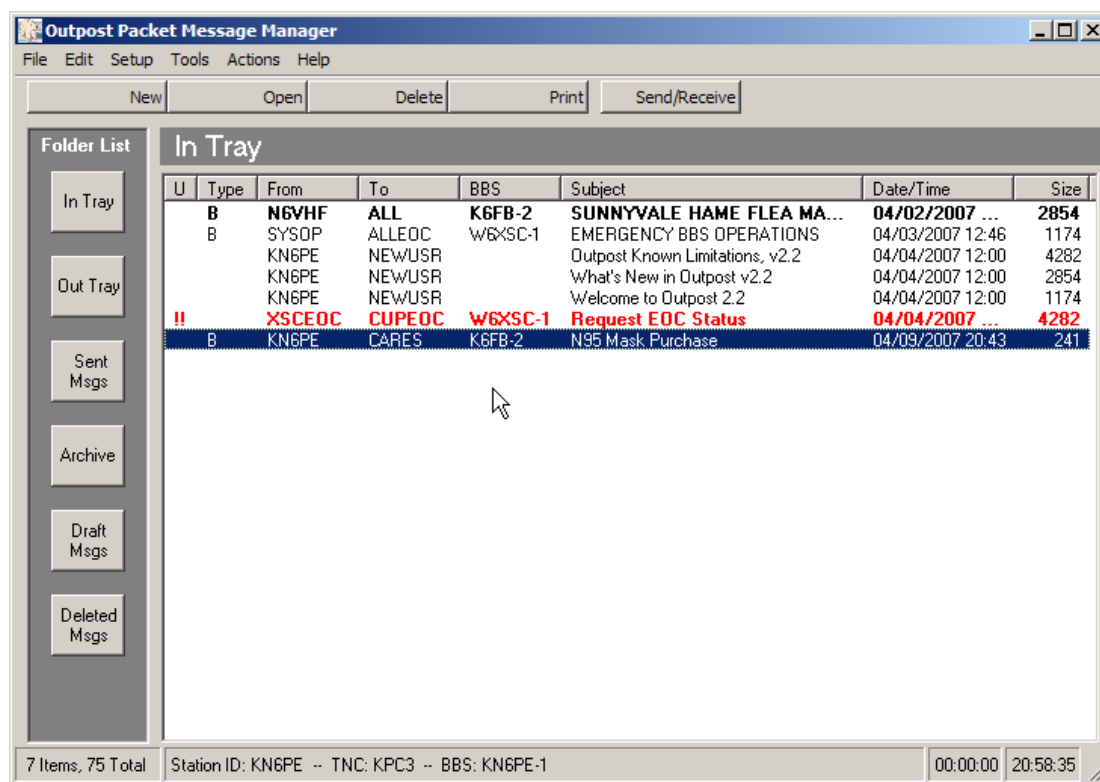




Outpost PMM Messages

Message Management

- E-mail look and feel
- Message storage folders
- Message flagging
(unread=**BOLD**, urgent=**Red**)
- Message work flows
- Forms support
- Tactical Call signs
- Manage BBS and interfaces
- User customization

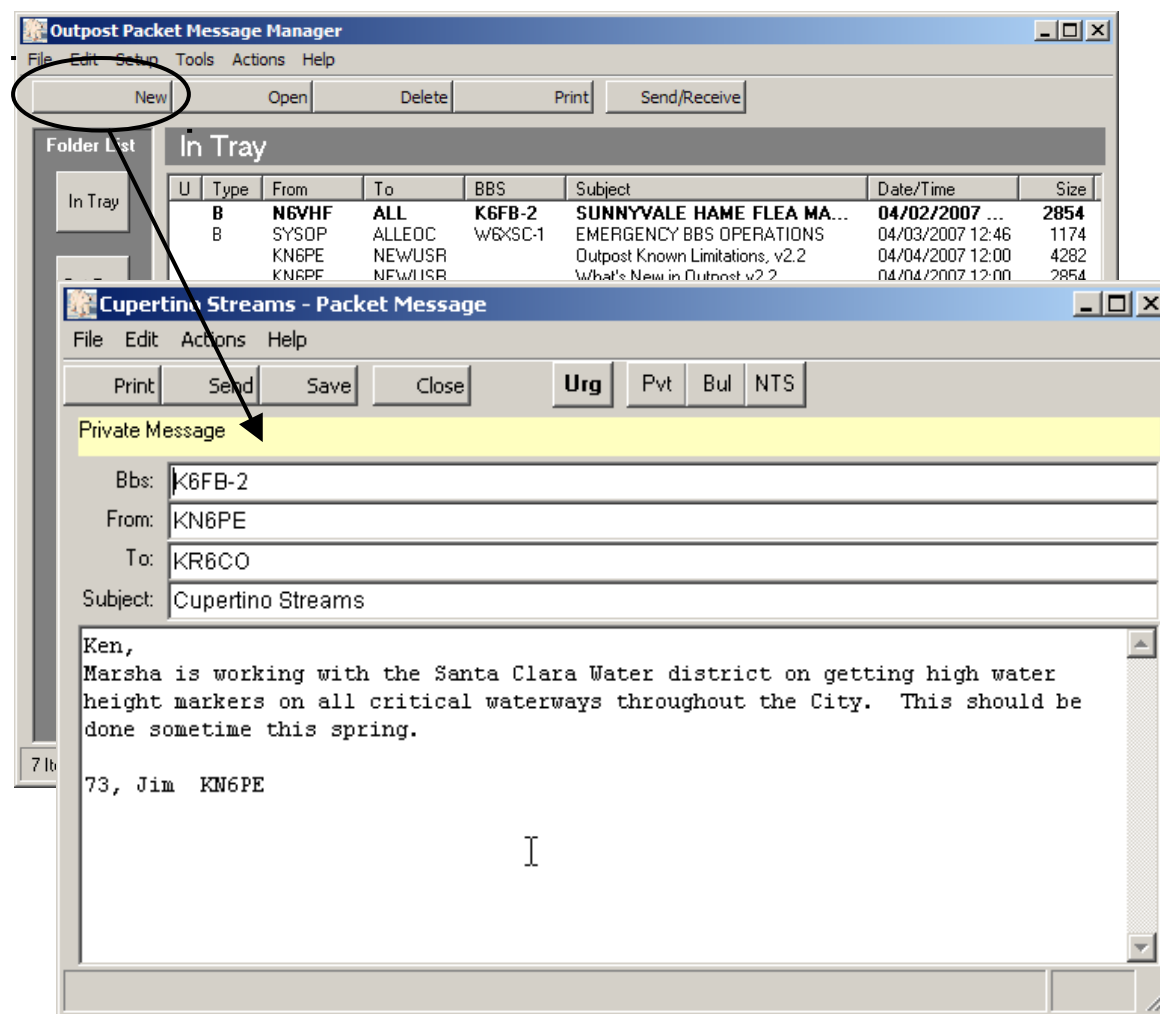




Creating Outpost Messages

Message creation

- Private, Bulletin, & structured message types
- Message formatting
- Message priorities
- Delivery/read receipts

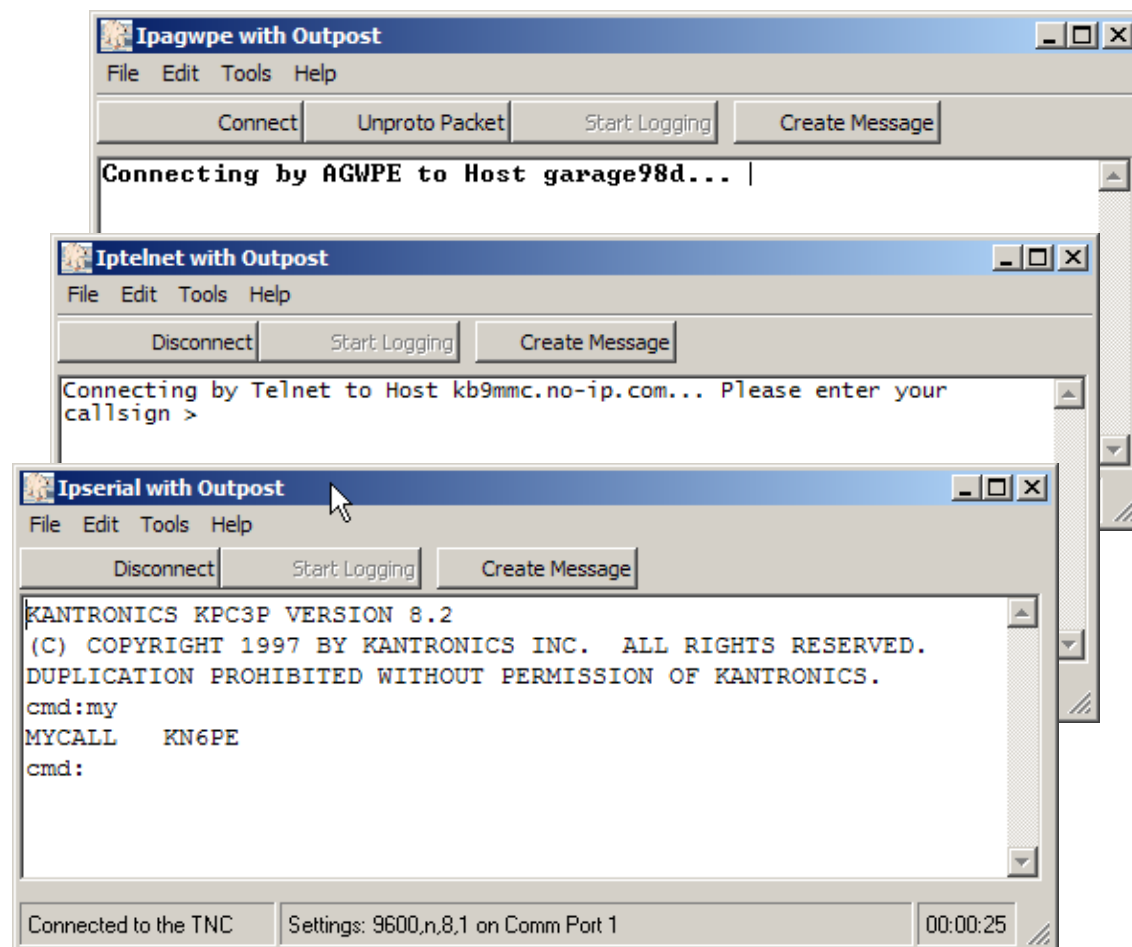




Outpost PMM Tools

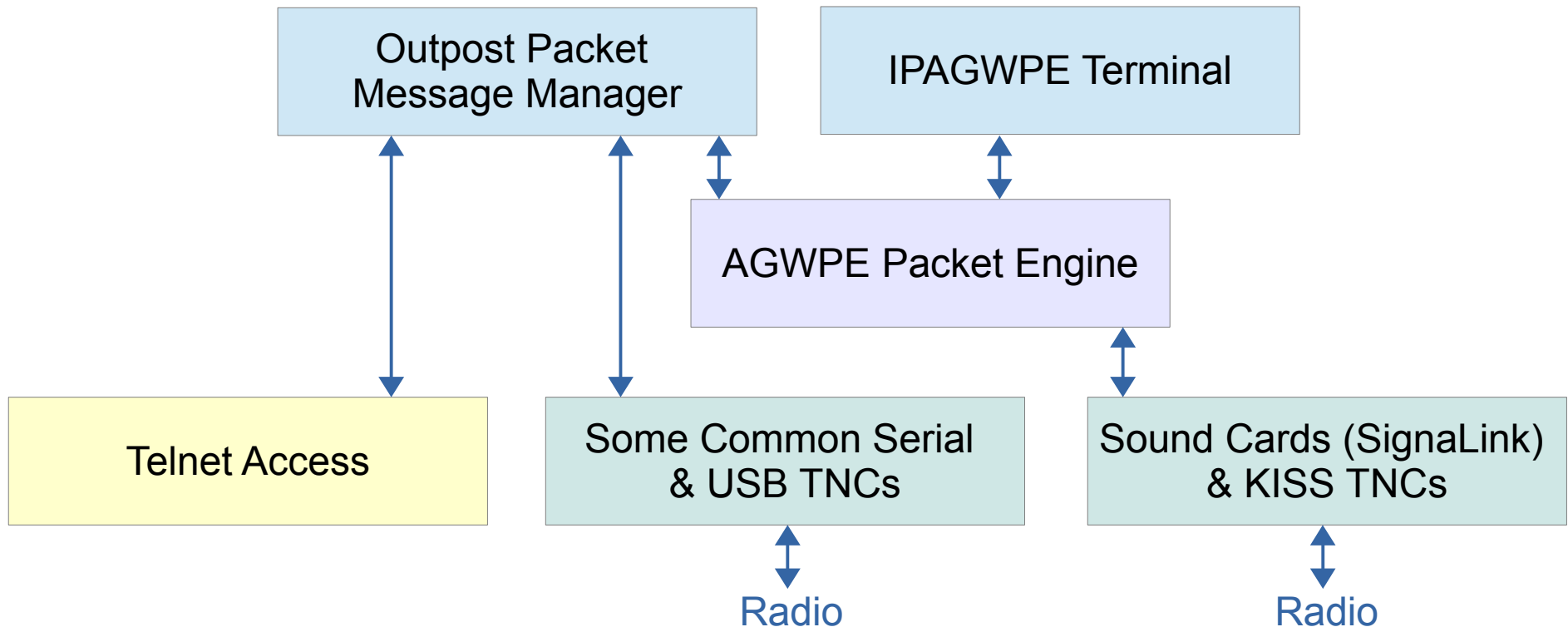
Interactive Packet Windows

- Programs to manually interact with serial TNCs and remote BBSs via
 - AGW Packet Engine
 - Telnet access
 - Serial port (including USB)
- Logging controls
- Cut-and-paste clipboard support
- Directly create a message





Outpost Client Mail Program





Demo Time...

Let's do the
demo!