

Alameda ARES Exercise Review

Lessons Learned from our
Exercise on January 9, 2010

Agenda

Introductions

Review of January Exercise and What We Learned

Future Events

Open Discussion on Procedures and Practices

Introductions

Restrooms

Water Cooler

Thanks Alameda Fire Dept.

Review of the January Drill

- Resource Net
- Preparedness
- Disorientation and Confusion
- Assignments
- Nets and Net Procedures
- Message Handling

Resource Net

- Well Done
- Good Resource Response
- Activation Checklist
- More Net Operators

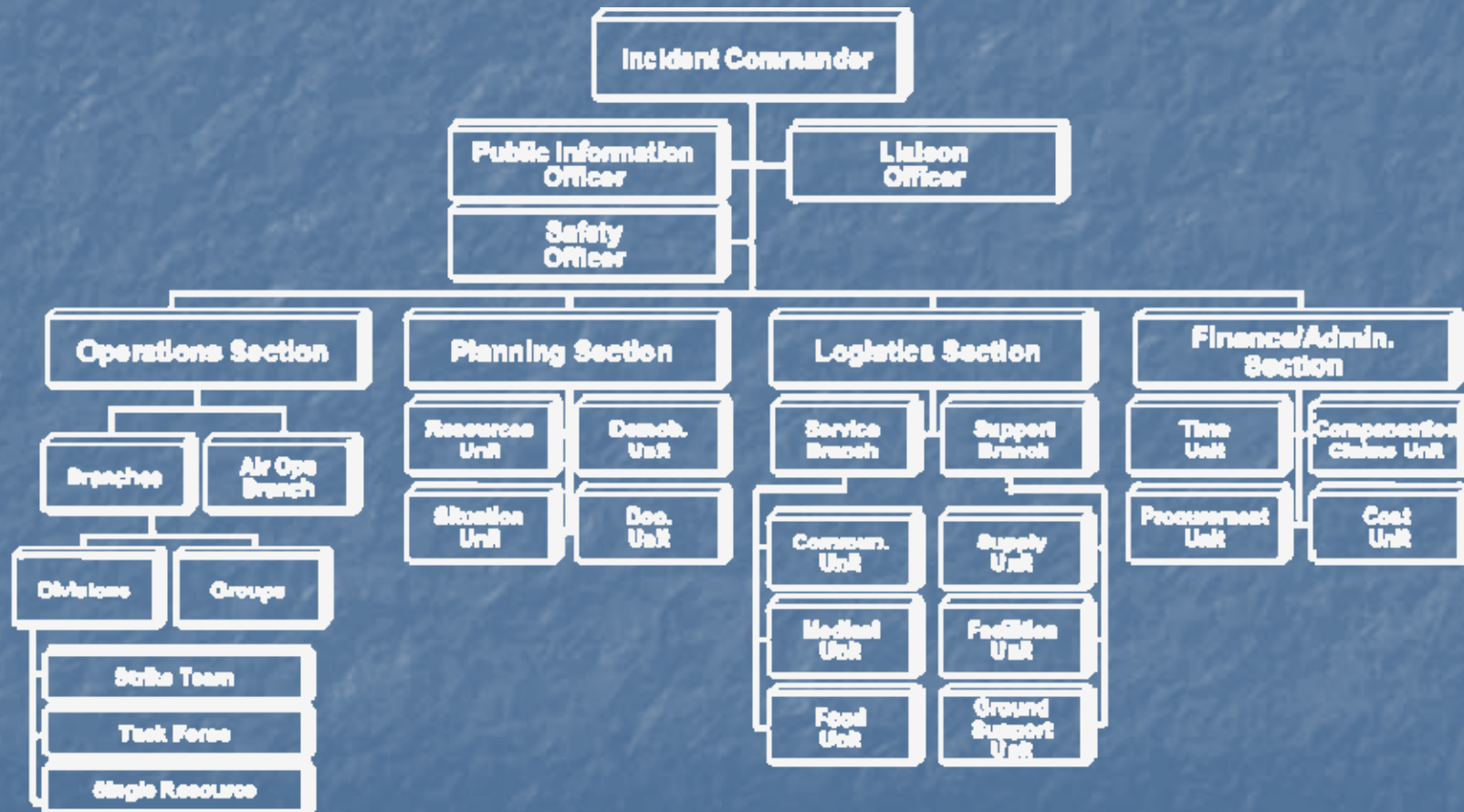
Preparedness

- Well Prepared
- Radio Equipment and Familiarization
- Writing Materials
- Comfort and Welfare
- Training

Disorientation and Confusion

- Location, Location, Location
- Organization
- Understanding Our Role
- Understanding Our Capabilities
- Understanding Disaster Communications
- Message Creation

ICS Refresher



Assignments

- Arriving At Your Assigned Location
- Set-Up
- Runners/Scribes
- Stay In Control
- Relief and Continuity

Nets and Net Procedures

- Net Operations
- Station Identification

Net Control Operators

- Start-Up
 - Net Script
 - Set the Rules
 - Logging Resources In and Out
- Shut-Down

Net Participants

- Listen
- Follow the Rules
 - Listen First
 - Follow Net Etiquette
- Log In and Out

NCS Identification

- Repeat Net Preamble
- This is a Drill/Exercise
- ID

Operator Identification

- Tactical Call Signs
- This is a Drill/Exercise
- ID

Message Handling

- Basic On-Air Practices
- The Message
- Tracking

Basic On-Air Practices

- Listen
- Accuracy Over Speed
- Use Plain English
- Ask For Repeats

The Message

- What it is All About
- Precedence
- Accuracy
- Rules of Message Content

Message Tracking

- Message Number
- Reply Needed?
- Write it Down
- Routing

Forms

- Message Form ICS 213
- Communications Log ICS 309

That Completes the Review

- Alameda ARES Communications Plan
- The Future
- Open Discussion

Alameda ARES Communications Plan

Alameda ARES RADIO COMMUNICATIONS PLAN				Prepared: 02/20/2010	Version : 1.0
Basic Radio Channel Utilization					
Radio Type/Cache	Channel Name	Function	Frequency / Tone	Assignment	Remarks
70cm Repeater	ROMEO 1	Primary Voice communications	444.875 + PL 88.5	Primary Resource, & Tactical Net	K6QLF Repeater
70cm simplex	ROMEO 2	Alternate Voice communications	444.875	Net Secondary	Repeater output Frequency if repeater out of service
2m simplex	ALPHA	Simplex Backup	146.505	Voice Backup	Expect poor coverage. Relays will be required.
2m simplex	BAKER	Simplex Backup	146.535	Alternate voice	See above
2m simplex	CHARLIE	Simplex Backup	146.550	Alternate voice	See above
2m simplex	DELTA	Simplex Backup	146.595	Alternate voice	See above
2m simplex	PAPA 1	Packet	144.91	Digital	Emergency Packet Frequency
2m simplex	PAPA 2	Packet	144.99	Alternate Digital	Emergency Packet Alternate
70cm simplex	VICTOR	Simplex Backup	446.000	Alternate voice	Backup if 2m channels busy
70cm simplex	WHISKEY	Simplex Backup	445.500	Alternate voice	See above
70cm simplex	YANKEE	Simplex Backup	441.000	Alternate voice	See above
2m APRS	X-RAY	APRS	144.390	Primary APRS channel	Standard APRS channel
2m APRS	ZEBRA	APRS Backup	144.410	Secondary APRS channel	Alternate APRS channel

Prepared by Sandy Lavine, KO6JF, ARES EC City of Alameda

Future Events

- ARES/CERT Exercise April 24, 2010
- Training Via Online Courses
- Formal Training if Needed
- Fall Drill with City of Alameda/CERT

Open Discussion

A Few Topic Suggestions

- Message Tracking
- Talking to The Press
- Training and Preparation

Open Discussion

THANKS!

- Let Me Know What You Think
- Let Me Know How I Did
- Leave the Training Facility In Order